



WHERE MUSIC MEETS EDUCATION

Kimichi School Worcester

Independent Music Specialist Mainstream School

Prospectus 2026–27



Battenhall Avenue, Worcester WR5 2HN | 07515 654793 | www.kimichiworcester.co.uk

Sister school to Kimichi School Birmingham, founded 2014 | September 2026

Kimichi Worcester at a Glance

**New
2026**

Opening September

Max 10

Students per class

11-16

Years 7 to 11

Music

Specialist mainstream

Kimichi School Worcester is an independent music specialist mainstream school opening in September 2026 — sister to Kimichi School Birmingham, which has been transforming young people's lives since 2014. We offer ambitious education to students aged 11–16, with music at the absolute heart of everything. Walk through our doors and you hear it: music being made, music being discussed, young people who know they belong here.



School type	Independent music specialist mainstream school
Age range	Years 7–11 (ages 11–16)
Opening	September 2026
Class size	Maximum 10 students
Curriculum	Full National Curriculum + music enrichment
Flexi-schooling	Available by arrangement
EHCP placements	Considered on individual basis
Sister school	Kimichi School Birmingham (est. 2014)
Partnership	Birmingham Conservatoire

Welcome to Worcester

From Sally Alexander MBE, Executive Headteacher

Kimichi School started as a pipe-dream — a reaction to a system that seemed intent on forcing square pegs into round holes, and to the continuing marginalisation of music in education. Having spent years in maintained schools as a teacher and a governor, I became convinced that something was deeply wrong. The Head of Music in a school of 600 whose only music teacher had been “re-assigned” to teach RE. Peripatetic teachers shoehorned into a cupboard, allowed 20 minutes for an instrumental lesson. The slow disappearance of GCSE Music, of school ensembles, of orchestras.



In September 2014, Kimichi School Birmingham opened with two children and one teacher. More than a decade later, it has become something that makes us genuinely proud every single day. What I and all the staff who have joined over the years are most proud of is the family feel that is so often remarked on. I joke sometimes that we are a large, slightly dysfunctional family — but that is exactly how it feels. And that is exactly what we are bringing to Worcester.



The biggest lesson I learnt, having started a youth orchestra in the Caribbean that toured to the UK, was that music is at one and the same time a great leveller and yet extremely differentiated. In very few subjects can a complete beginner naturally work alongside an advanced student. The inherent teamwork, discipline and leadership skills of ensemble playing are not to be underestimated — and the scientific evidence of music's impact on the brain is, as we share in this prospectus, extraordinary.



We are recreating something very special in the city of Worcester. We very much look forward to welcoming you through our doors.

Sally Alexander MBE

Executive Headteacher

“Music is not what we teach. It is how we teach.”

The Science: Why Music Works

Peer-reviewed evidence for music-centred education

The belief that music is central to great education is not simply a philosophy at Kimichi. It is backed by a substantial and growing body of scientific research. The findings below are drawn from peer-reviewed journals and systematic reviews. They explain, in scientific terms, what we see every day in our classrooms.

Music and Academic Achievement

A landmark longitudinal study published in Nature Scientific Reports found that structured music lessons significantly enhance children's language-based reasoning, short-term memory, and planning ability — the executive functions that underpin learning across every subject.

Children who received music lessons showed improved language-based reasoning, the ability to plan, organise and complete tasks, and significantly improved academic achievement overall.

Frontiers in Neuroscience / ScienceDaily, 2018
(Longitudinal study, University of British Columbia)



A 2025 study using the Adolescent Brain Cognitive Development (ABCD) dataset confirmed that continuous music training has measurable, long-term effects on cognitive development throughout adolescence.

Longitudinal effects of continuous music training were observed on cognitive development, including processing speed, working memory and attention.

Annals of the New York Academy of Sciences, 2025
(ABCD Study, Habibi et al.)



Music and Anxiety / EBSA



Anxiety — including school-based anxiety and Emotionally Based School Avoidance (EBSA) — is one of the most significant barriers to learning in young people today. Research shows that music-based interventions produce clinically meaningful reductions in anxiety symptoms.

Children and adolescents with anxiety disorders showed a 67% reduction in anxiety symptoms after 12 weeks of consistent therapeutic music

sessions. Cortisol — the primary stress hormone — was reduced by an average of 25%.

Systematic review and multilevel meta-analysis, PMC / National Library of Medicine, 2025

A 17-week school-based music programme produced significant reductions in detection rates of depression (13.1% to 1.7%), anxiety (14.3% to 5.1%) and stress (5.2% to 0%) in middle school students.

Cluster Randomized Controlled Trial — Lin et al., Psychology in the Schools, 2025



Music and ASC / Autism Spectrum Condition

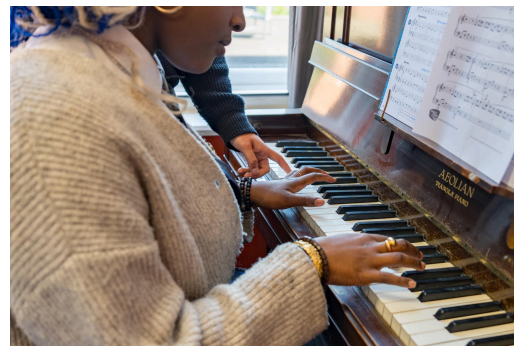
A comprehensive meta-analysis of 18 randomised controlled trials involving 1,457 children with Autism Spectrum Condition found strong evidence for music-based interventions in improving communication, social skills, and engagement.

Meta-analysis of 18 RCTs (1,457 children with ASD): music therapy significantly improved language communication and social skills. Combining music with conventional approaches produced the strongest outcomes.

Frontiers in Psychology, 2024 — systematic review and meta-analysis

Music improves social communication and auditory–motor connectivity in children with autism. Positive effects were found on speaking, listening, reading and writing, and on peer interactions.

Neuron / PMC (National Library of Medicine), 2018



Music and ADHD



Research into music and ADHD has identified seven distinct neurocognitive mechanisms by which music interventions can help mitigate the challenges of attention, impulsivity and executive function.

Music interventions may help ADHD through seven neurocognitive mechanisms: executive function enhancement, timing improvement, arousal regulation, default mode network modulation, neural entrainment, affective management, and social bonding facilitation.

Frontiers in Psychology, 2025 — ‘Rhythms of Relief’

Music intervention significantly improved ADHD children's attention, reduced behavioural problems, and improved social skills and emotional regulation. Passive music exposure also improves arithmetic, drawing and reading comprehension.
JMIR / Review of Effects of Music on ADHD, 2023



Music and Social-Emotional Development (SEMH)

For young people with Social, Emotional and Mental Health needs, the relational and expressive dimensions of music education offer something difficult to replicate anywhere else in the curriculum.

The most frequently cited benefits of music engagement were an improved sense of belonging, of being connected, and of strengthened relationships between students and between students and their teachers.
Music learning and school-aged children's wellbeing: A scoping review — SAGE Journals, 2026



Music education significantly enhances students' mental health. Emotional intelligence moderates and strengthens this relationship, suggesting that music education both develops and is amplified by students' growing emotional self-awareness.
Frontiers in Psychology, 2022



“The evidence is clear: a music-centred education does not just enrich learning — it transforms the very conditions in which learning becomes possible.”



Music. Mind. Motivation.

The three pillars of a Kimichi education

Everything we do at Kimichi Worcester is built around three inseparable pillars. They are not separate departments or timetabled subjects — they are a way of thinking about what education is for.

🎵 MUSIC

Music is the heartbeat of Kimichi. Every student learns at least one instrument. Specialist instrumental tuition is included in the fees. Students perform regularly — in ensemble, in concert, in community. For those pursuing music professionally, we offer extra practice time, support with auditions and exams, and direct links to Birmingham Conservatoire. Local professional musicians are part of our school community.

❤️ MIND

Education is not only about textbooks and exams. We want students to leave us confident, academically sound, and socially capable. Our unique LIFE subject addresses real-world skills: budgeting, cooking, driving, relationships, mental health, DIY. Mindfulness and wellbeing are built into our school structure, not an afterthought.

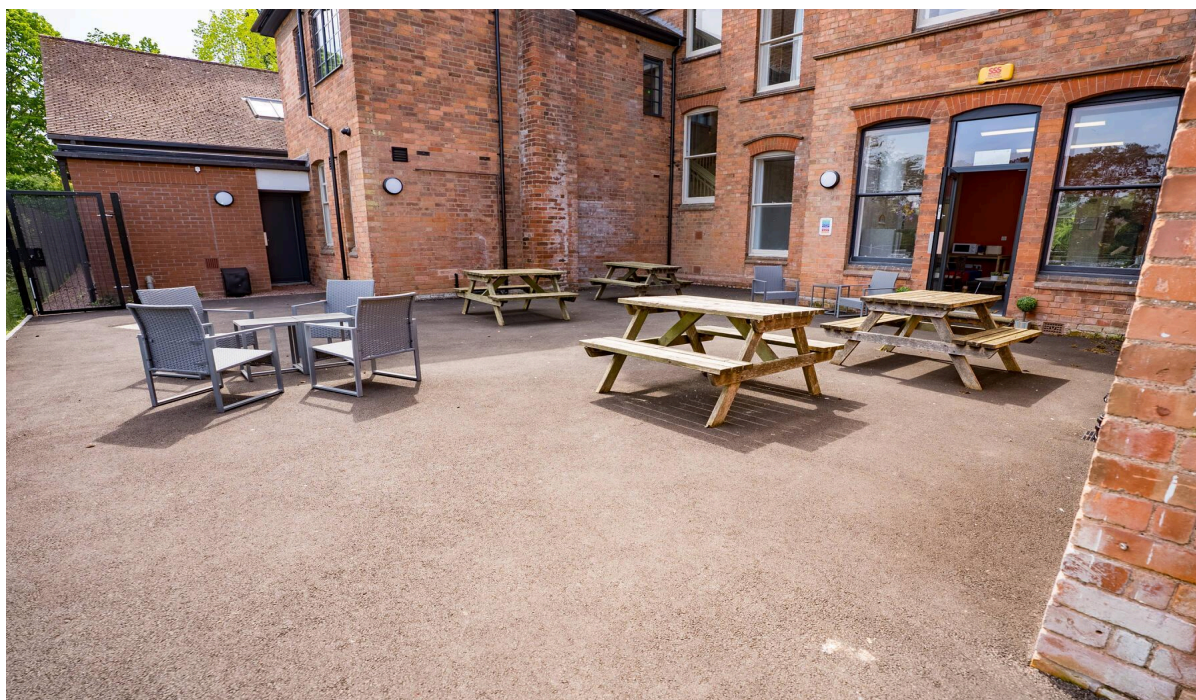
★ MOTIVATION

Our school is run by the pupils, for the pupils. The school council governs real decisions and pupils rise to that responsibility every time. Classes are so small — never more than ten — that every individual can be seen, celebrated, and challenged. School trips and outdoor learning are a big part of who we are. We go down the rabbit hole with our students, and we love it.



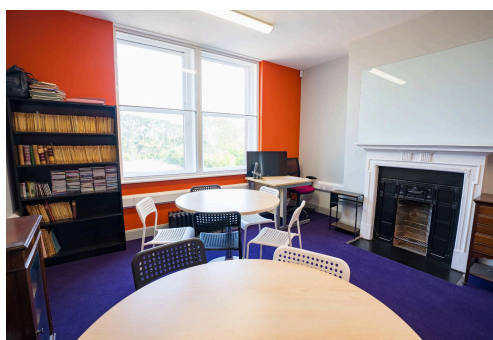
About Kimichi Worcester

A new school with deep roots



Kimichi School Worcester is based at the old St. Placides site on Battenhall Avenue — a characterful setting in a leafy residential part of Worcester, just five minutes from Junction 7 of the M5. It is a location with history and warmth, and we believe the space will set the tone for everything that happens inside it.

We are a new school, opening in September 2026. But we are not starting from scratch. We are carrying everything that has been learned and proven at Kimichi School Birmingham since 2014 — the pedagogy, the ethos, the family feel, the music, the evidence — and recreating it in the city of Worcester.



Our Teaching Philosophy

Results-oriented and skill-based, our teaching gives students knowledge they will carry into life. We use a variety of study methods designed to match different learning types — visual, auditory, kinaesthetic — and we encourage flexibility within lessons.

One of our most distinctive approaches draws directly from orchestral life: more able students naturally assist those who are less technically proficient. This is not something we impose — it arises organically from the culture of ensemble music, and it transforms the classroom. We are, genuinely, all in it together.

Our tracking, assessment and marking policies underpin all learning. Teachers provide inspiration; students, supported by their peers, increasingly direct their own enquiry. We love jumping down the rabbit hole with them.

“We are a large, slightly dysfunctional family — and that is exactly how it feels. We are very proud of it.”

Our Sister School

Kimichi School Birmingham — eleven years of proof

Kimichi School, 111 Yardley Road, Acocks Green, Birmingham B27 6LL

Founded 2014 | Ages 10–18 including Sixth Form | Boarding available

www.kimichischool.co.uk | 0121 773 7700

Kimichi School Birmingham opened in September 2014 with two children and one teacher. It has grown, year by year, into a school that its students, staff, and families talk about with enormous pride. The evidence is not just in the science — it is in the young people who arrive anxious, withdrawn, or disengaged, and leave with qualifications, confidence, and a love of music that shapes the rest of their lives.



Birmingham offers the full curriculum from Year 5 through to Sixth Form, including boarding provision for students from further afield. It is inspected under the Independent School Standards and is a registered learning partner of Birmingham Conservatoire.

As sister schools, Birmingham and Worcester will share ethos, curriculum frameworks, enrichment opportunities, and staff expertise. Students at Worcester will have access to the full network — including joint performance events, shared professional development, and the opportunity to audition for the Kimichi Symphony Orchestra.

♥ Family feel

Both schools have a distinctive warmth that parents and students consistently remark on. Staff know every pupil by name. Every student is seen.

♪ Music first

Both schools place music at the centre of the curriculum and the culture. Every student plays an instrument. Every student performs.

❖ Shared standards

Both schools share tracking, assessment, SEND and safeguarding frameworks, ensuring consistency and quality across the network.

Our Curriculum

Broad, ambitious, and enriched by music

The Kimichi Worcester curriculum is the full National Curriculum, delivered with the highest expectations of every student. We offer specialist teaching across the full range of subjects, in classes of maximum ten, with music running as a living thread through everything we do.

Key Stage 3 (Years 7–9)

English, Mathematics, Biology, Chemistry, Physics, History, Geography, Music, Art, RE, Modern Foreign Languages, PE, Careers, PSHE and our unique LIFE subject — all taught by subject specialists, all enriched by the music-centred ethos of the school.



Key Stage 4 (Years 10–11)

All students study English Language, English Literature, Mathematics and Music at GCSE. Option subjects include separate Sciences, History, Geography, Art, PE/Sport, and Modern Foreign Languages.

LIFE: Our Unique Subject

Education should not end at exam results. Our LIFE subject equips students for the world beyond school: budgeting and mortgages, cooking, basic DIY and flatpack building, driving, relationships, LGBTQ+ equality, SRE and mental health. These are the skills that mainstream education too often neglects. At Kimichi Worcester, they are on the timetable.



Subjects Taught at Kimichi Worcester

Music, English Language, English Literature, Mathematics, Biology, Chemistry, Physics, History, Geography, Art, Religious Education, Modern Foreign Languages, Careers, Physical Education, and LIFE (including SRE and LGBTQ+ equality).

Our Approach to Learning

Small classes mean every lesson can be genuinely personalised. Teachers know what each student needs, what they are ready for, and what will make them come alive. We use peer learning — the orchestral model, where the more advanced naturally support those still developing — and we give students real agency in how they explore ideas.

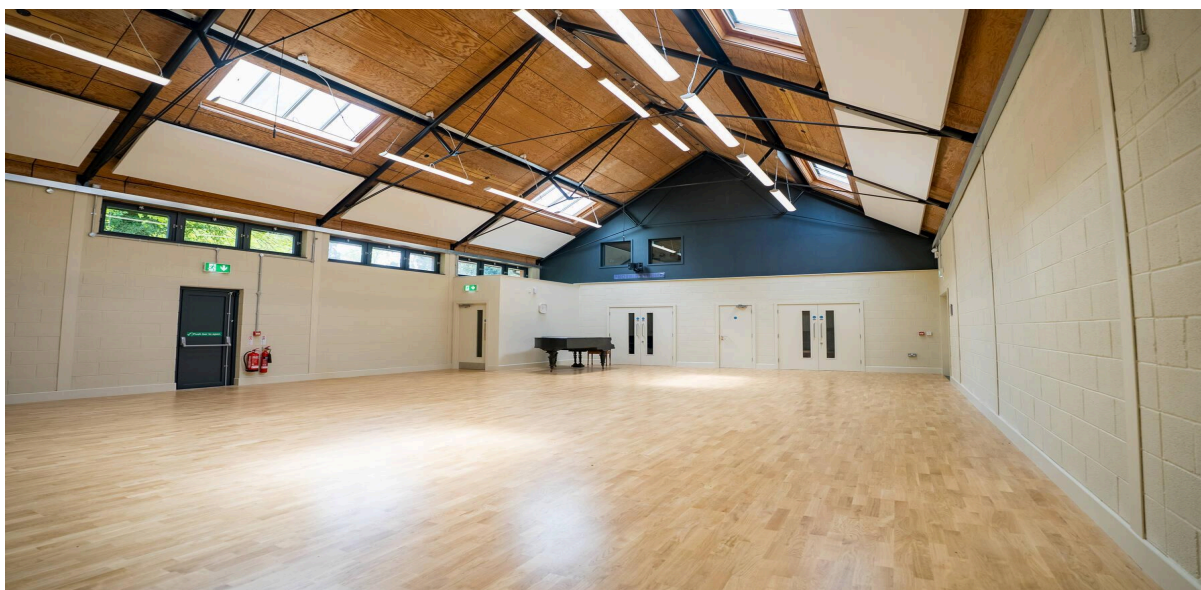


School Trips and Outdoor Learning

Learning that goes beyond the classroom is central to our ethos. Kimichi students visit concerts, cultural sites, nature, and community settings regularly. Trips are heavily subsidised as part of our commitment to accessibility.

Music Life at Kimichi Worcester

Every student plays. Every student performs.



Music at Kimichi is not a subject you attend once a week. It is a way of life. From the moment students arrive, they are part of a musical community — practising, listening, rehearsing, collaborating, performing. This is what makes Kimichi different, and it is what the science tells us makes such a profound difference to how young people learn, feel, and grow.

Every Student Plays

Every student at Kimichi Worcester learns at least one instrument. Specialist instrumental tuition with a qualified teacher is included in the school fees. For students who have never played before, this is the ideal place to begin. For those who already play, we will take them further than they thought possible.

Ensemble at the Heart

All students perform regularly with the school ensemble. Ensemble music teaches teamwork, active listening, trust, leadership and discipline in a way no other subject can. These are not soft skills. They are the foundation of a capable, resilient person.

Conservatoire

Kimichi Worcester has associations with Birmingham Conservatoire. This gives our students direct access to professional musicians, master classes, and guidance on auditions, Grade examinations and recitals. Local professional musicians are embedded in our school community.

Kimichi Symphony Orchestra

The Kimichi Symphony Orchestra is a high-level community orchestra. Talented Kimichi Worcester students are invited to audition and join alongside outstanding musicians from across the region — performing publicly, including at Birmingham Town Hall. This is music at its most aspirational: a reminder of where dedication and love of music can take you.

“You don’t have to be André Rieu to come here — just a love of music you can demonstrate.”

SEND & Wellbeing Support

Every child is genuinely known here

Kimichi Worcester is a mainstream school with a powerful advantage: our music-centred approach and small class sizes create conditions in which young people with a wide range of needs can genuinely flourish. We are not a special school, and we do not claim to meet every need. But for the right child, Kimichi Worcester can be the school that finally works.

Who Thrives at Kimichi?

Students who have experienced anxiety, Emotionally Based School Avoidance (EBSA), ASC, mild ADHD, and SEMH difficulties have found at our sister school in Birmingham an environment that finally makes sense to them. Not because we lower expectations, but because the experience of learning here is fundamentally different. The science explains why — and we see the evidence every day.



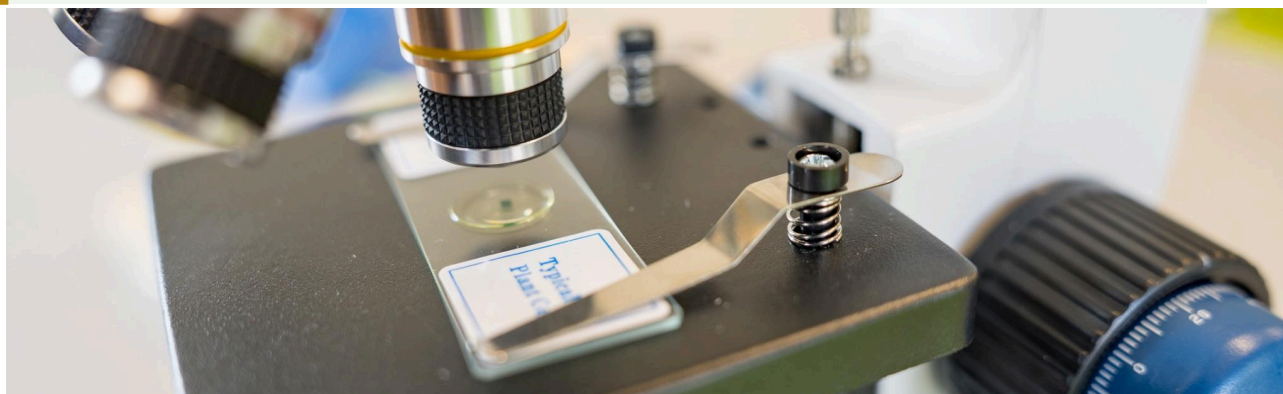
EHCP Placements

Young people with Education, Health and Care Plans are considered on an individual, case-by-case basis. Each EHCP placement involves trial days and a careful assessment of whether we can fully support and nourish the student throughout their time here. We will never accept a SEND child without being confident we can genuinely meet their needs.

Flexi-Schooling

Flexi-schooling is available at Kimichi Worcester by arrangement. This is particularly valuable for students who are in the process of re-engaging with education after a period of school avoidance, or who need a gradual, supported transition into full-time attendance. Please contact us to discuss what this could look like for your child.

“Small class sizes, individual learning plans, bespoke SEMH support and a unique approach to education mean Kimichi Worcester is the right place for young people who do not fit the mould.”



Admissions & Fees

Affordable, accessible, music-led



Who We Admit

Kimichi Worcester welcomes applications from any child who will benefit from the type of education we offer. We are not ability-based. Students are expected either to already play an instrument or to take one up upon admission. Admission decisions are free from discrimination on grounds of disability, race, ethnicity, gender, or national origin.

The Admissions Process

Parents complete an application form and send it with their child’s school report and any other relevant information. Full school reports are considered; a reference may be requested from the child’s current school. The headteacher and staff review applications and may invite families in for a meeting before a decision is made.

Musical Ability

There is no formal admission test. However, we do ask that prospective students demonstrate their love of music in some way — playing their instrument, taking part in a class music lesson, or a more formal audition for those with higher grades. Simply liking music is not quite enough: we need to see the passion that drives everything we do here.

School Fees (+flexi-schooling)— Years 7–11 (Full Time)

£3,000 + VAT

per term — full time

Included in fees:

- ✓ All curriculum tuition across all subjects
- ✓ Specialist instrumental tuition (one instrument)
- ✓ Whole-school music lessons
- ✓ Heavily subsidised school trips
- ✓ Full PSHE and LIFE programme
- ✓ Wellbeing and mental health support

Financial support available:

- ★ Music scholarships — awarded on merit
- ★ Means-tested bursaries — enquire in person
- ★ EHCP placements considered case by case

Flexi-schooling:


Available by arrangement. Contact us to discuss individual options for part-time or gradual re-integration packages.

To enquire: kimichisom@gmail.com

How to Find Us

Battenhall Avenue, Worcester WR5 2HN

Kimichi Worcester is at the old St. Placides site on Battenhall Avenue — a residential street in a beautiful part of Worcester, directly opposite Mount Battenhall Retirement Village. We are just five minutes from Junction 7 of the M5, easily reached from across Worcestershire, the West Midlands, and the wider region.

 **From the M5:** Exit at Junction 7. Drive towards Worcester city centre. Take the Camp Hill Road turning on the left from London Road. This leads directly to Battenhall Avenue.



By Train

Worcester has two mainline stations: Foregate Street and Shrub Hill. Both are a short taxi or bus ride (Route 27) from Battenhall Avenue (~10 min).

Direct services to Worcester from:

Birmingham New Street / Snow Hill **~40 min**
Malvern **~10 min**
Redditch **~30 min**
Cheltenham Spa **~30 min**
Gloucester **~25 min**
Hereford **~45 min**



By Bus

Local bus services connect Battenhall Avenue to Worcester city centre, the railway stations, and surrounding areas.

Key route:

Route 27 Battenhall ↔ Worcester city centre and stations

From the station by taxi:

Worcester Foregate Street to school: ~10 min. Worcester Shrub Hill to school: ~12 min.

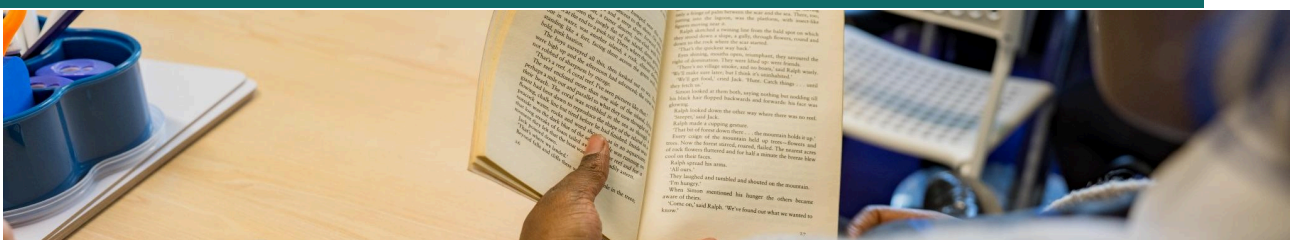


By Car

Approx. drive times to Battenhall Avenue WR5 2HN (normal traffic):

Worcester city centre **5–10 min**
Malvern **15 min**
Bromsgrove **25 min**
Gloucester **25 min**
Redditch **35 min**
Cheltenham **30 min**
Birmingham **45 min (M42/M5)**
Hereford **45 min**
Stratford-upon-Avon **40 min**

Plan your journey: [google.com/maps](https://www.google.com/maps) — search "Kimichi School Worcester, Battenhall Avenue, Worcester WR5 2HN"



Get in Touch

We'd love to hear from you

Kimichi School Worcester

Battenhall Avenue (Old St. Placides site)
Worcester
WR5 2HN

T: 07515 654793

E: kimichisom@gmail.com

W: www.kimichiworcester.co.uk

Facebook: Kimichi Worcester

*Registered with the Department for Education
September 2026*

Our Sister School

Kimichi School Birmingham

111 Yardley Road, Acocks Green, B27 6LL

0121 773 7700

www.kimichischool.co.uk

Kimichi School Worcester — Where Music Meets Education

© Kimichi School Worcester 2026 | Prospectus 2026–27 | Opening September 2026 | Registered with the Department for Education